

RPE Srl

Leader in Fluid Management Control

100%  
MADE IN ITALY

# Connect'eedy 6<sup>th</sup> Series



[www.rpesrl.it](http://www.rpesrl.it)



# Main features

100%  
MADE IN ITALY

2

**Working pressure:** 0.5-10bar

**Room temperature:** 0-60°C

**Fluid temperature:** 0-60°C

**Flow direction:** unidirectional

**Nominal diameter:** Ø20mm

**Control:** NC, NO, latching

**Inlet:** 1"BSPP Swivel F / 1"M

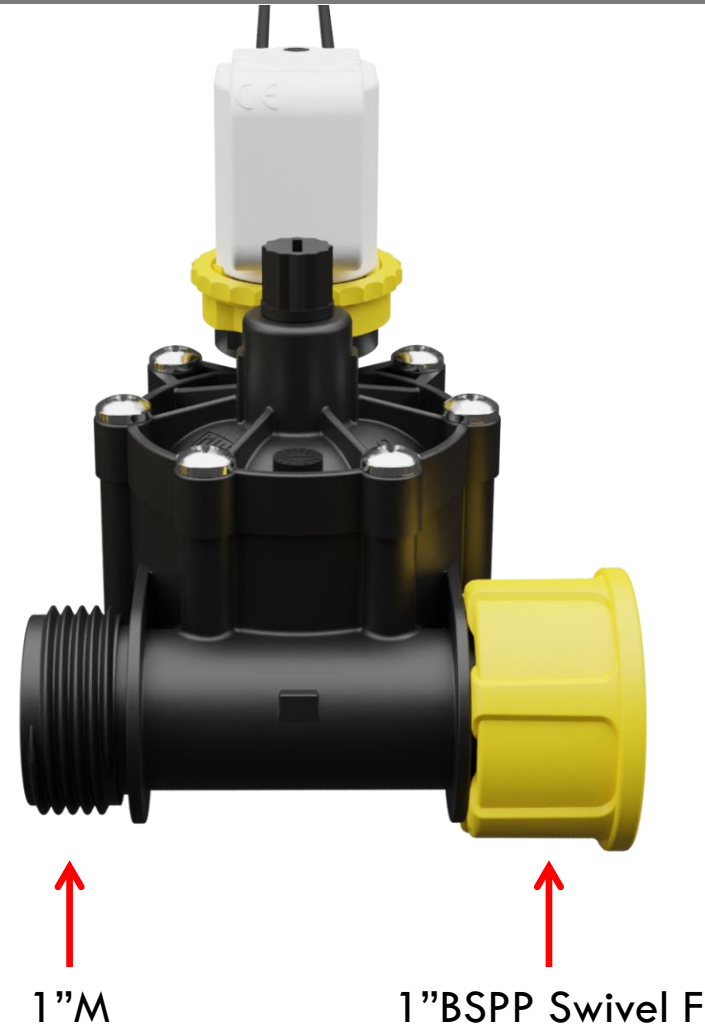
**Outlet:** 1"BSPP Swivel F

**Electrical connection:**

Unipolar cables 600mm

Bipolar cables max 5000mm

Male Faston 6,3x0,8mm

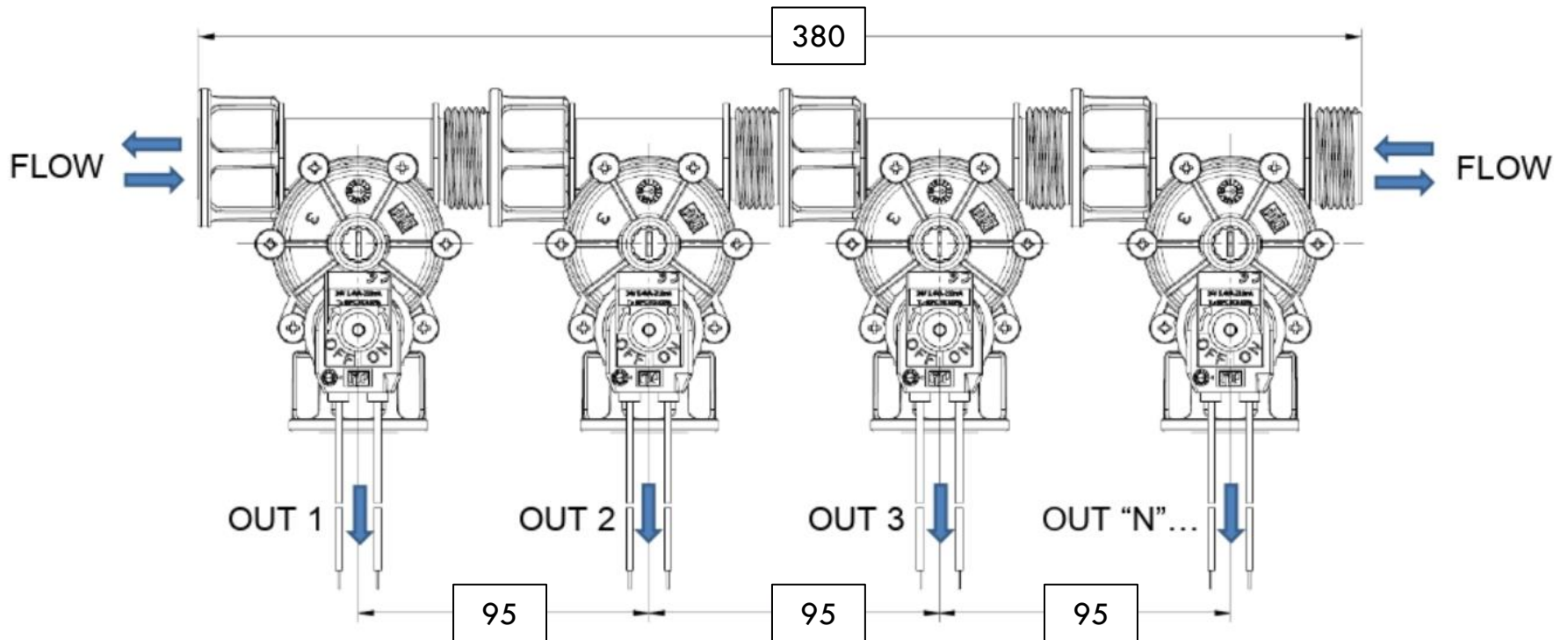




# Working scheme

100%  
MADE IN ITALY

3





# Physical characteristics

100%  
MADE IN ITALY

4

**Valve body:** PA 66 GF 30%

**Diaphragm:** NBR (buna)

**Core:** stainless steel

**Spring:** stainless steel

**Assembly:** with screws, serviceable



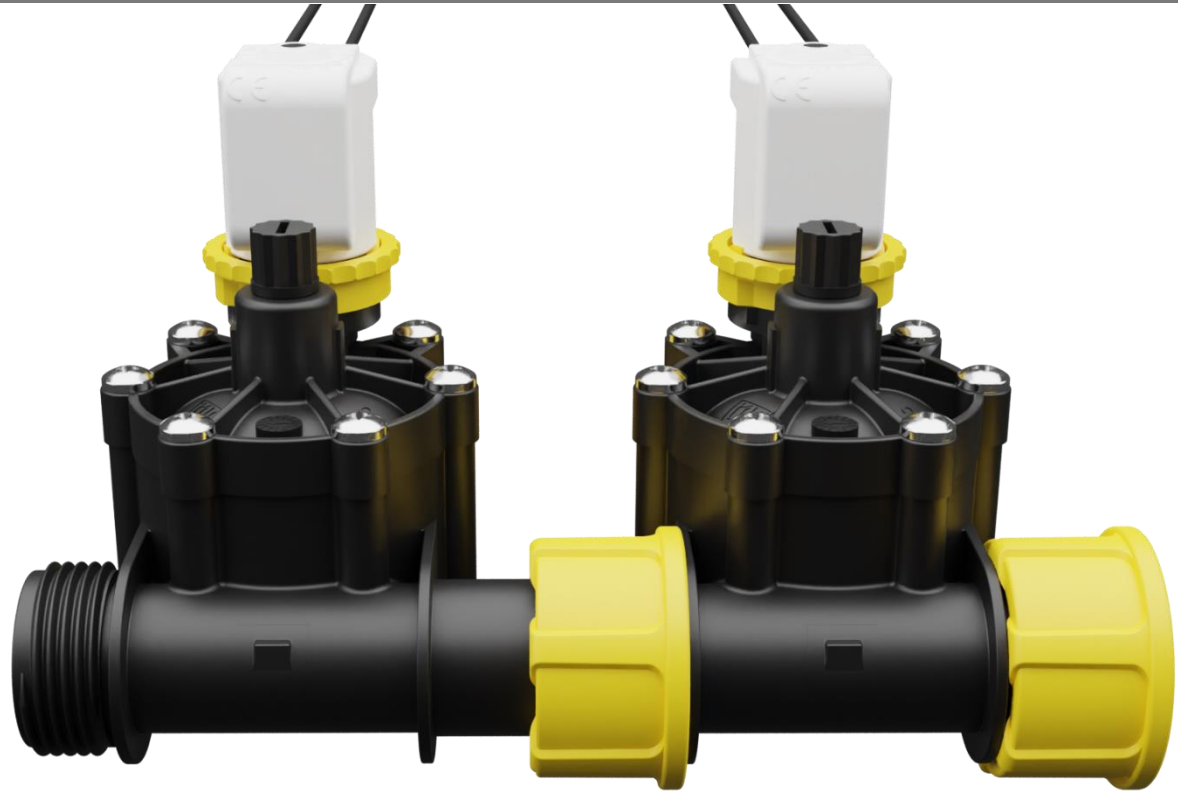


# Applications

100%  
MADE IN ITALY

5

- Agricultural land
- Sport facilities
- Small terraces
- Vertical walls
- Series installation in irrigation valve boxes





# Solenoids

100%  
MADE IN ITALY

6

- 12V AC, DC
- L9V, L12V DC
- 24V AC, DC
- 110V AC
- 230V AC





# Thanks

100%  
MADE IN ITALY

7



Nothing great has ever been done without passion